



Nottingham Lateral Skull Base Cadaver Dissection Course

4th and 5th June 2026

Venue: Postgraduate Education Centre, City Hospital, Nottingham

Course fee

£950/- for delegates

£250/- for observers

Dissection approaches

Middle cranial fossa

Retrosigmoid

Retrolabyrinthine

Translabyrinthine

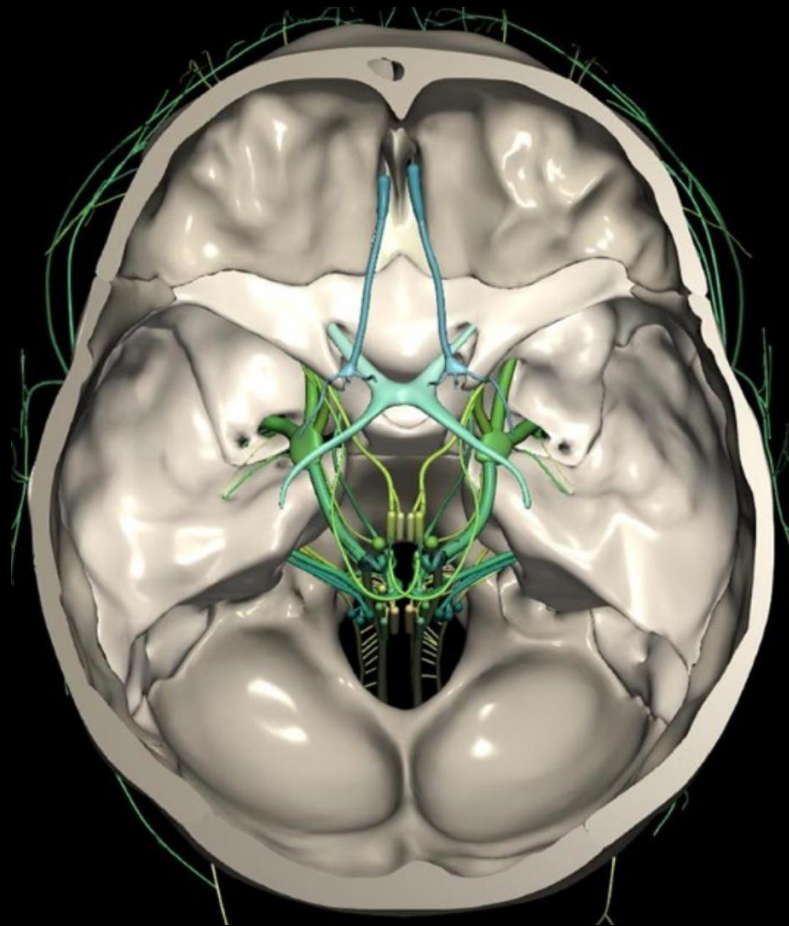
Infracochlear

Infratemporal fossa

Further details contact

Priya.achar1@nhs.net

Laurence.glancz2@nhs.net



Course Directors

Priya Achar

Laurence Glancz

Faculty

Gerry O'Donoghue

Iain Robertson

Wai Sum Cho

Harshal Ingale

Graham Dow

Booking details contact

Sarah Lord

Nottinghamearsurgery@gmail.com